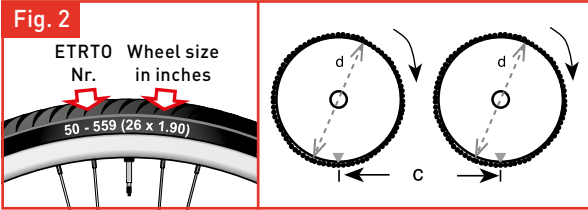


Automatic start/stop
To save the battery the device switches itself off after 5 – 6 minutes if no impulse is received by the sensor. To switch the device on again, press one of the buttons.

Setting the wheel sizes
Press and hold the left button and the right button for 2 seconds (or after replacing the battery) to switch the device to the wheel size entry mode. Multiply the wheel diameter, d (figure 2), in mm by 3.1416 in order to establish the wheel coefficient, c. Press the left button to select the position that needs to be entered and then the right button to enter the required number (for fast forward keep pressed down). Press the left button again to select km/mile. (Please note that removing the battery deletes the wheel size information).



- Distance in mm per revolution -

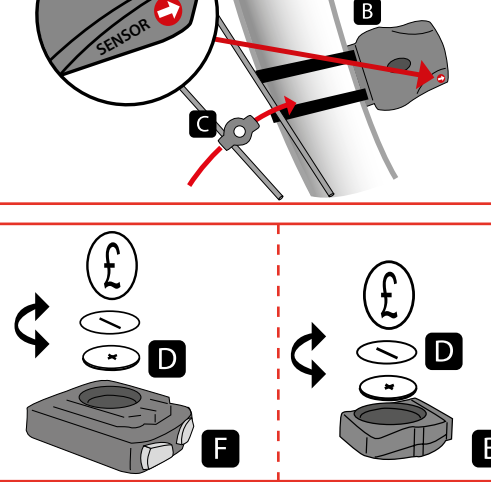
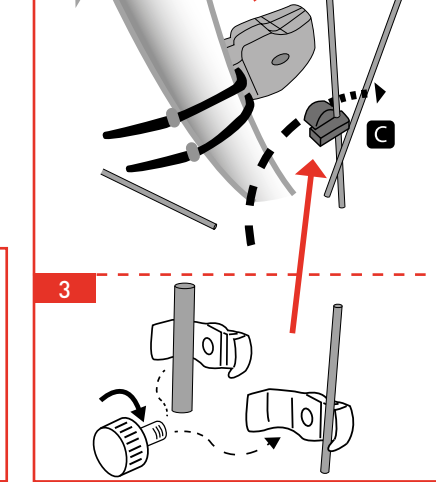
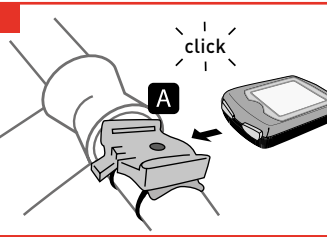
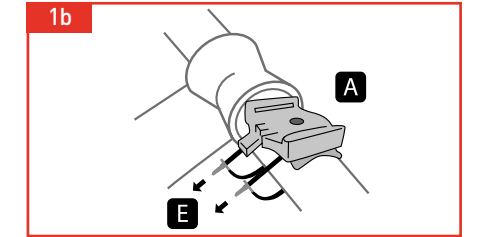
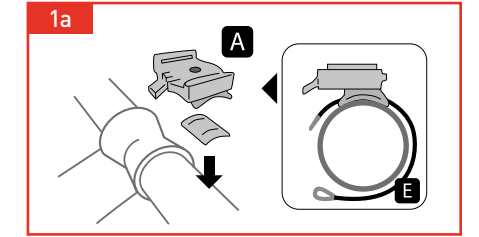
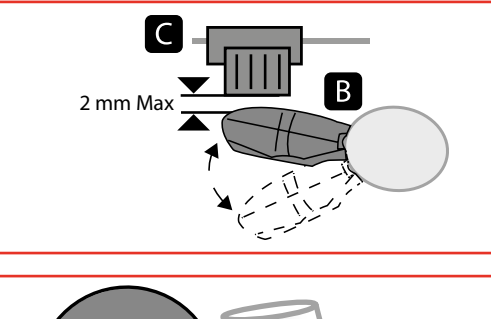
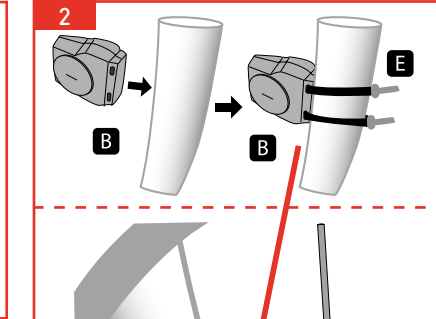
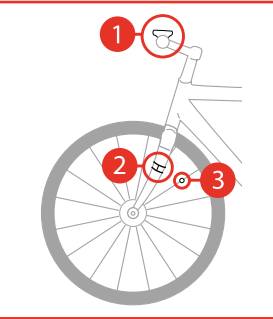
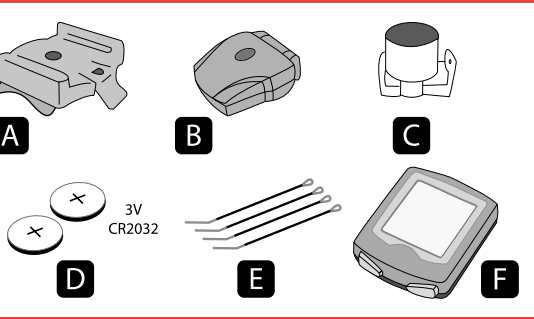
Please use this table for assistance in calculating the wheel diameter and wheel circumference.

WHEEL SIZES		
Wheel size in inches	ETRTO Nr.	Wheel coefficient
16 x 1.75	47 - 305	1216
20 x 1.75	47 - 406	1623
24 x 1.75	47 - 507	1940
26 x 1.6	44 - 559	2051
26 x 1.75 x 2	47 - 559	2070
26 x 1.9	50 - 559	2089
26 x 2.00	54 - 559	2114
26 x 2.125	57 - 559	2133
26 x 1 3/8	37 - 590	2105
26 x 1 3/8 x 1 1/2	37 - 584	2086
26 x 3/4	20 - 571	1954
27 x 1 1/4	32 - 630	2199
28 x 1.5	40 - 622	2224
28 x 1.75	47 - 622	2268
28 x 1 3/8 x 1 5/8	37 - 622	2205
700 x 18C	18 - 622	2102
700 x 20C	20 - 622	2114
700 x 23C	23 - 622	2133
700 x 25C	25 - 622	2146
700 x 28C	28 - 622	2149
700 x 32C	32 - 622	2174
700 x 35C	37 - 622	2205
700 x 40C	40 - 622	2224

Choice between miles and kilometres
After setting the wheel size the symbol “KM” will blink above the wheel size entry. If you would like the computer to show the speed in km/h press the left button. If the computer should calculate in mph press the right button first and then the left button.

Calorie counter
On the display the prompt km/h will then blink. At this point you have to set your age. By pressing the right button you can change the value and go forward to the next figure using the left button. In the bottom line you can set your body weight in kg. By pressing the right button you can change this value and go forward to the next figure using the left button.

Service indicator
After setting the wheel diameter the indicator 600 km flashes. In the bottom left corner you will see a spanner. This function enables you to set the number of kilometres until the next service of your bike. By pressing the right button you can choose to set a number between 200 and 800 km as a reminder to service your bike. By pressing the left button the value is saved. On reaching the pre-set number of kilometres a spanner appears in the display. By pressing the left button you can switch off the reminder.



Fault	Problems
No tachometer display	Incorrect magnet/sensor alignment
Delayed display of request	The temperature range lies outside of the specified minimum value (0-55°C)
Black screen	The temperature is too high or the display was exposed to direct sunlight for too long
Failing screen display	Empty battery or the power supply is too weak
Incorrect set-up for distant	Check the sensor and magnet reading positions, that the battery is correctly fitted and the fitting is in accordance with the instructions
The display shows blurred / irregular symbols	Remove and reinsert the battery

BATTERY DISPOSAL:
Batteries must not be placed in household rubbish containers. You are obligated by law to return used batteries and rechargeable batteries. They can be dropped off at our shop or at other locations near you (e.g., other businesses or municipal collection points). Batteries and rechargeable batteries are marked with a crossed-out dustbin and with the chemical symbol of the toxic substance, i.e. „Cd“ for cadmium, „Hg“ for mercury and „Pb“ for lead.

BATTERY SAFETY
Always follow warnings and manufacturers instructions for both the batteries and the battery-operated product. Use only

the correct type and size battery indicated. Check the contacts of both the battery and the battery-operated product for cleanliness. Always insert the batteries correctly with regard to polarity (-/+), matching the positive and negative symbols of both battery and product. Putting them in backwards, the product will sometimes still operate, but may inadvertently charge the batteries resulting in venting or leaking. Remove and safely dispose or exhausted batteries immediately. Replace all batteries in battery-operated products at the same time and with the batteries of the same type and manufacture. Do not short circuit batteries. When the positive (+) and negative (-) terminals of a battery are in contact with each other, the battery can become short circuited. For example, loose batteries in a pocket with keys or coins can be short circuited possibly resulting in venting or explosion. Do not heat batteries. Do not crush, puncture, dismantle or otherwise damage batteries. Do not charge non-rechargeable batteries. Keep batteries out of reach of small children. If you suspect that a battery has been swallowed, seek immediate medical advice. Please retain for future reference.

PACKING DISPOSAL
The packaging is made of 100% environmentally friendly materials which can be disposed of at local recycling points.

COMPUTER DISPOSAL
For disposing of the computer and radio sensor, please obtain advice from your local authority or town council.

