



Instruction manual

CICLO*NAVIG* 50

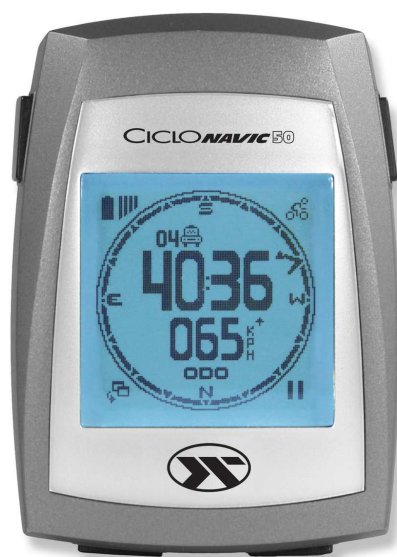


Table of contents

1. General informations	3
2. Operational setup	3
2.1 Charging.....	3
2.2 Installing the handlebar bracket.....	3
2.3 Attaching to the handlebar bracket.....	4
2.4 Attaching to the wristband (optional)	4
2.5 Using the protective cover	4
3. Using the buttons.....	5
3.1 Overview	5
3.2 Button functions.....	5
4. Usage	6
4.1 Main mode.....	6
4.2 Bike info mode 1	7
4.3 Bike info mode 2.....	8
4.4 Menu mode	8
4.5 Data logging function (recording).....	9
4.6 Mark a POI (Point of Interest).....	9
4.7 Navigation	10
4.8 Compass	11
4.9 Backlight.....	11
5. Setting mode	11
GPS INFO.....	11
ODOMETER.....	11
SETTING.....	12
CLEAR DATA.....	12
POWER MODE.....	12
TIME ZONE.....	12
CALIBRATION	13
UNIT.....	13
TRACK.....	13
LANGUAGE	14
6. Connect with PC / PC evaluation.....	15
6.1 Installation	15
6.2 Using CicloGuide.....	16
7. Service and maintenance	19
8. Trouble shooting.....	20
9. Guarantee.....	21
10. Technical Data.....	22
11. Guarantee certificate	23

Note:

In order to use all functions of the *CicloNAVIC 50* in the correct way, please read through this operating manual carefully.

Congratulations !

By purchasing the **CicloNAVIC 50** you have acquired high-level GPS-datalogger with electronic compass and navigation function.

1. General informations

The **CicloNAVIC 50** is equipped with a GPS receiver and is so able to calculate and record distance and speed. With the program CicloGuide the recorded tours can be displayed on the PC.

Additionally the **CicloNAVIC 50** offers the possibility to reconstruct a tour (with a maximum of 50 waypoints) which was created on the PC. The directional sign in the display is shown by arrows.

For this the reception of GPS-satellite signals is required. During the first use it can last a bit, to receive the first GPS-signals.

The reception of the GPS-signal is shown by vertical bars beside the battery symbol in the upper part of the display.

Attention: whoever carries out sport should have a general medical check up on his/her general state of health – especially beginners, persons older than 35 years of age and anyone who has suffered from illnesses or injuries in the past. It is recommended that a doctor be consulted in any case in the presence of risk factors, such as smoking, high blood pressure, high cholesterol values, diabetes, lack of exercise and excess weight.

2. Operational setup

2.1 Charging

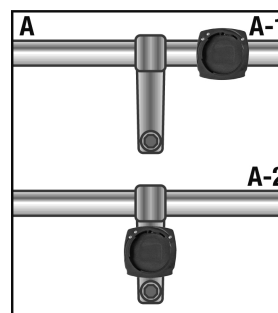
To charge the **CicloNAVIC 50** remove the rubber plug on the backside of the **CicloNAVIC 50**. Connect the mini-USB-plug of the USB-cable with the **CicloNAVIC 50** and the USB-plug with a USB-port on your PC.

Charging time is about 2,5 hours.

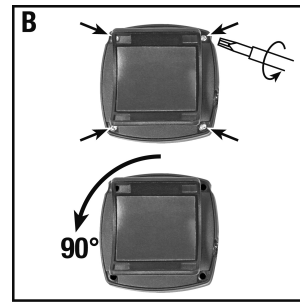
During the charging a corresponding symbol is shown in upper left display. After the charging remove mini-USB-plug and close rubber plug.

2.2 Installing the handlebar bracket

The handlebar bracket can be mounted on the handlebar (pict. A-1) or on the stem (Abb. A-2).



For using it on the stem rotate the upper part of the bracket. Open the 4 screws, rotate it 90° to the left and assemble it again with the 4 screws (pict. B).



Remove the protective tape from the underside of the handlebar bracket, place the handlebar bracket in the required position on the handlebar (or on the stem) and press it down slightly. Secure it with the cable ties

2.3 Attaching to the handlebar bracket

To insert the **CicloNAVIC 50** into the handlebar bracket, rotate it 45° to the left, insert it and then turn it to the right until it engages.

To unlock, rotate the **CicloNAVIC 50** 45° to the left and remove it.

2.4 Attaching to the wristband (optional)

To use the **CicloNAVIC 50** also e.g. during hiking an additional wristband is available (at your dealer).

The wristband can be fixed on the wrist, but also on the upper arm. To insert the **CicloNAVIC 50** into the wristband operate as described in chap. 2.3.

2.5 Using the protective cover

This package also contains a silicon protective cover for the **CicloNAVIC 50**. This is useful to protect the **CicloNAVIC 50** e.g. of heavy rain during a ride.

Insert the **CicloNAVIC 50** into the cover, so that the big opening is on the display and the small opening is on the back.

After use during wet weather the protective cover should be taken off for better drying.

3. Using the buttons

3.1 Overview

Upper Left button

- Confirm / set
- Start/stop recording (3 sec.)



Upper Right button

- Scroll

Lower Left button

- Mode
- Back
- Call up POI menu (3 sec.)

Lower Right button

- Power on / off (3 sec.)
- Backlight on / off

3.2 Button functions

Button	Option	Function
LR-Taste	Press 3 sec.	• Power on / off the CicloNavic 50
	Press short	• Backlight on / off
LL-Taste	Press short	• Switch to next mode or display When in submenu: back to previous mode / display
	Press 3 sec.	• Call up POI-menu
UL-Taste	Press short	• Confirm / set function or setting
	Press 3 sec.	• Call up recording menu
UR-Taste	Press short	• Scroll to requested function or setting
		• Show data of previous tour (in Bike info mode)

4. Usage

The **CicloNAVIC 50** has four different displays (modes). By short pressing LL-button you can switch from one mode (display) to the next mode (display).

These modes are:

- Main mode
- Bike info mode 1
- Bike info mode 2
- Menu mode

There are additionally three different sport modes (Walk mode, Bike mode, User mode), to optimize specific settings (e.g. memory interval for waypoints, turn radius and so on) of the **CicloNAVIC 50** depending on the chosen kind of sport). These sport modes can be chosen in the settings of the menu mode.

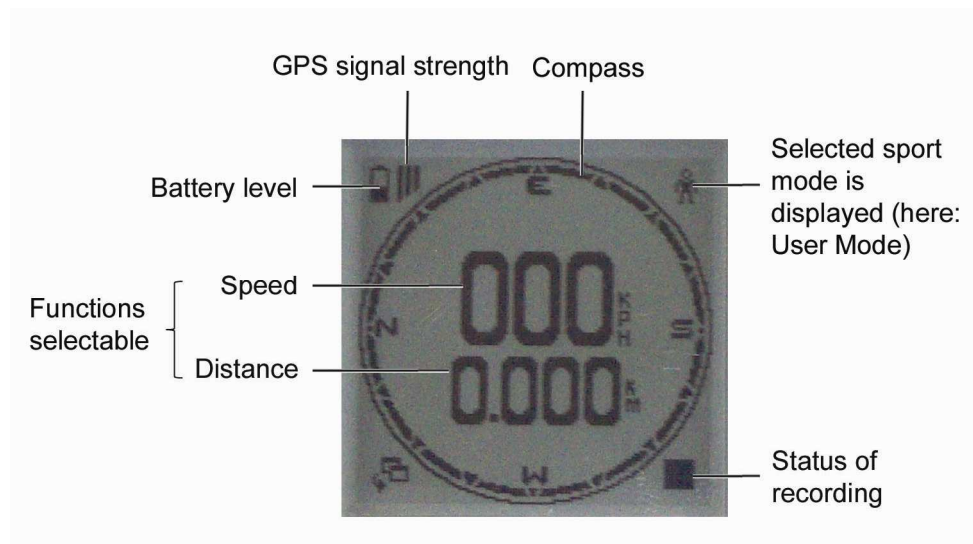
A symbol in the upper right display of the main mode shows which sport mode is currently chosen.

Note: in order to calculate distance and speed, a recording has to be started before you start the tour (see chap. 4.5)

4.1 Main mode

Main mode (Main display) appears directly after switching on the **CicloNAVIC 50** (to switch on press LR-button 3 sec.).

This display shows functions like e.g. current speed and distance, compass and – if started – the navigation by showing arrows in the compass ring.



You can **choose** by yourself **which two functions** shall be **shown in the middle lines** of the display.

For this shortly press UL-button in main mode, now upper display line starts blinking. By always shortly pressing UR-button you can scroll between the possible functions, by short pressing UL-button the function is confirmed and stored and now the lower line starts blinking. Here you can choose and store the function in the same way.

Functions:

- **Current speed**
Shows current speed in kilometer per hour (kph) or miles per hour (mph).
- **Ride time**
Shows current riding time.
- **Distance**
Shows current distance.
- **Remaining distance**
Shows the still remaining distance to target point (during a navigation)
- **Remaining ride time**
Shows the estimated remaining ride time to target point (during a navigation)
- **Average speed**
- **Maximum speed**
- **Current altitude**
Shows the current altitude (meter/m or feet/ft).
- **Variance altitude**
Shows the variance (difference) of the current altitude to the altitude at start time (meter/m or feet/ft).

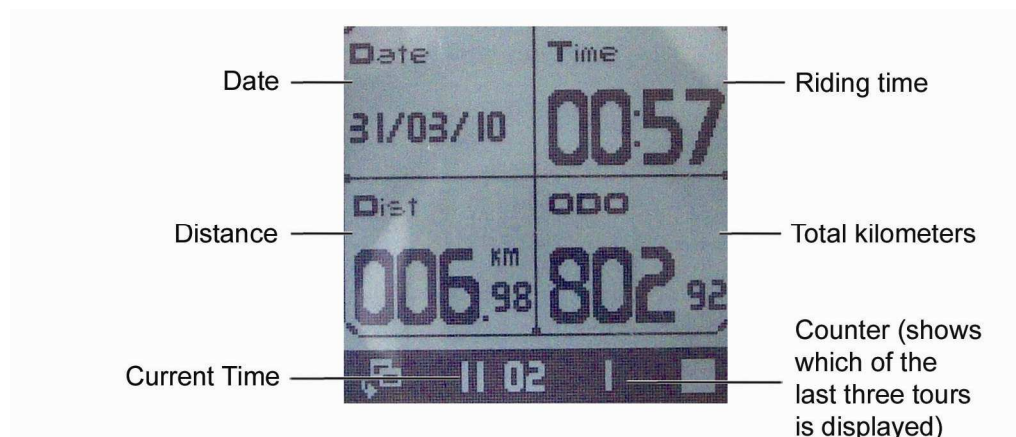
4.2 Bike info mode 1

This mode appears after main mode (with short pressing LL-button).

It shows specific tour data (depending on the speed) of the current or last recorded tour.

Note: a recording has to be started in order to calculate these values.

For this press UL-button 3 sec., display shows small popup with symbols. Press again UL-button and recording is started (the recording symbol is then shown in the bottom line on the right in the display), see also chap. 4.5.



By short pressing UR-button it shows also the data of the two tours before this one. The counter in the bottom line shows which one of the last three tours is displayed at the moment.

4.3 Bike info mode 2

Appears after bike info mode 1 and shows more details of the tour.
Like in bike info mode 1 it can show data of the last three tours.

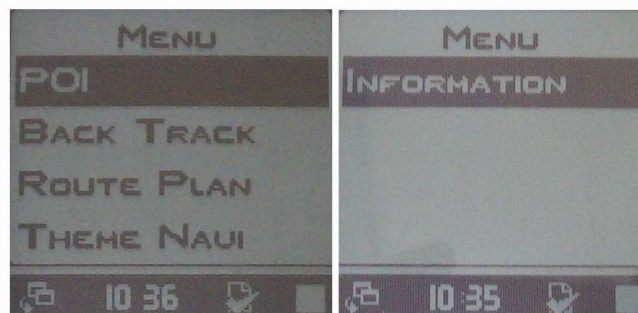


4.4 Menu mode

Appears after bike info mode 2.

Here you can see the POIs, BackTracks (recorded tours), the via PC uploaded tour and theme navigations and also you can do all necessary settings (see chap. 5).

Choose the requested function (with UR-button) and confirm with UL-button.



Options:

POI

Shows all stored POIs (see chap. 4.6).

BACK TRACK

Here you can choose one of the already stored (recorded) tours for 'BackTrack' navigation. This means you can go back the tour from end to start point. And you can also choose if you like to go back 'direct' (beeline from end to start point) or in 'sequence' (same way back as before).

ROUTE PLAN

Here you can choose a tour which you uploaded with the program CicloGuide. It shows the single waypoints (starting with the end point). If you want to navigate not to the end point, but to a milestone just choose the requested point by using UR-button and confirm with UL-button.

THEME NAVI

Here you can choose special points (like POIs) which you can upload with the program CicloGuide. Useful e.g. during holidays: just store the longitude/latitude of your hotel and then you can always easily find back to the hotel during your holidays.

Note: If you choose a POI/BackTrack/RoutePlan or Theme Navigation and confirm with UL-button, the **CicloNAVIC 50** switches automatically back to main mode and starts with navigation.

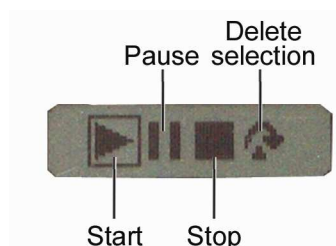
Simultaneously a recording is automatically started (except when you have chosen a back track).

Information

Here you can do the settings (see chap. 5).

4.5 Data logging function (recording)

In order to store the tour you make, you have to start a recording before you start:
For this press UL-button 3 sec. In main mode, a small popup appears with 4 symbols:



Choose the function **with UR-button** and **confirm with UL-button**. The corresponding symbol will be shown on the right side of the bottom line in the display.

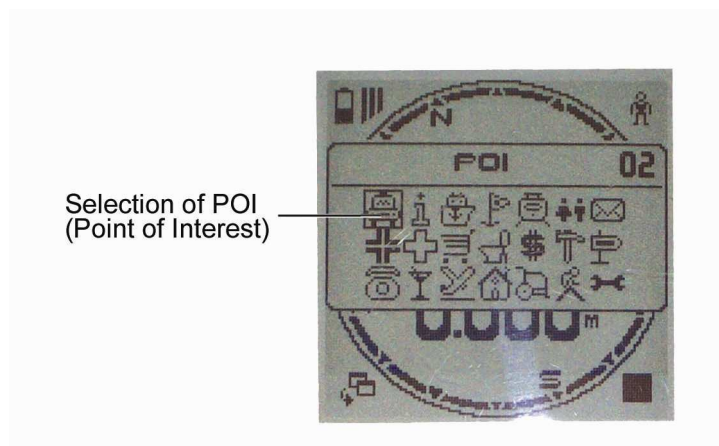
One tour can have at least 1000 waypoints (in bike mode these means 40 km – the logging interval for bike mode is preset with 40 m). When 1000 waypoints are stored, the **CicloNAVIC 50** stops automatically the recording and starts a new one.

If you want to store a longer tour, choose user mode (see settings in menu mode) and set logging interval to 100 m – then you can store up to 100 km in one tour).

4.6 Mark a POI (Point of Interest)

With the **CicloNAVIC 50** you can easily store the longitude/latitude of interesting points or places:

for this press (in main mode) LL-button for 3 sec. In the display appears the POI popup windows. There you see different symbols (with this symbols you can 'mark' your POI – so you can better recognize them).



By using **UR-button** you can **choose a symbol** for this POI (you can use one symbol for more than one POI), by short pressing **UL-button** the current latitude/longitude is **stored** with date, time and the chosen POI symbol.

There is a counter on the right side of the POI popup window, which shows the consecutive number of the POI.

The stored POIs can be recalled in the menu mode for a (beeline) navigation. There all stored POIs are shown with their symbol and date/time.

To choose a stored POI for navigation, switch to menu mode and POI, mark it by using UR-button and confirm with UL-button.

Now **CicloNAVIC 50** switches automatically back to main mode, starts the navigation to this POI and also starts a recording.

Note: if there is no or just a weak GPS signal, the POI popup window won't appear. Instead an error message is appearing which shows **'weak signal'**.

If this appears, you can get back to main mode by short press of LL-button.

4.7 Navigation

To use the **CicloNAVIC 50** for a navigation, you first have to choose a tour or target point in the menu mode (see chap. 4.4).

After confirming the chosen tour / target point the **CicloNAVIC 50** switches automatically back to main mode and starts the navigation

The navigation is shown by arrows in the compass ring, the arrow shows the direction of the target resp. the direction of the next waypoint.

In the display of the main mode a small line (above the two function lines) shows the description (if there is one used) of the next waypoint resp. of the target point.

After reaching a waypoint or the target point the display is blinking a few times and the next waypoint is shown resp. the navigation is stopped (if it was the target point).

If you want to delete a selected tour / target point, choose last point in the recording popup window (with UR-button) and confirm with UL-button (see chap. 4.5)

Note: with this only the selection is deleted, the tour /target point is still stored and can only be deleted in menu mode.

4.8 Compass

The **CicloNAVIC 50** is equipped with an electronic compass, which is displayed by a digital compass ring in main mode.

The cardinal directions are shown as N (= North), E (=East), S (=South) und W (=West).

If the compass shows wrong directions it needs to be calibrated (see chap. 5).

4.9 Backlight

The **CicloNAVIC 50** has an integrated backlight. Short press of LR-button switches the backlight on and off.

In the settings in menu mode you can choose if the backlight should act manually (on / off by pressing short LR-button) or automatically (switch on by using LR-button, automatically switch off after the set time period).

See chap. 5.

5. Setting mode

The following applies:

Choose different functions / values **with UR-button** resp. (ODO) **increase** the value **with UR-button**.

Confirm and **store with UL-button**.

To get back to the previous display or abort the setting, press LL-button.

Note: if you only choose a setting, but do not confirm with UL-button, still previous setting is active.

In menu mode you can do different settings.

For this choose point **INFORMATION** in menu mode with UR-button and confirm with UL-button.

Now the following appears:

GPS INFO Shows the GPS data (latitude and longitude) of current position.

ODOMETER Here you can set the total kilometers. You can increase the marked number with UR-button and confirm (and go on) with UL-button.

SETTING

Following settings can be done:

CLEAR DATA

Delete the recorded data.

Options:

POI

Back Track

Route Plan

Theme Navi

Choose data with UR-button, delete with short pressing UL-button.

POWER MODE

Settings for backlight and auto suspend can be done here.

Backlight

Select how backlight shall work.

Manual

Backlight is switched on and off by short press of LR-button.

10 sec

30 sec

60 sec

Backlight is switched on by every button press and automatically switched off automatically after set time period.

Note: by first button press only backlight is switched on, press again button in order to get the function.

Note: often use of backlight shortens battery life time.

Auto suspend

Select how auto suspend shall work.

Disabled

This setting disables the automatic suspend, i.e. **CicloNAVIC 50** stays on until it is manually switched off by pressing LR-button for 3 sec.

10 min

30 min

60 min

Without GPS signal and without any button press within this time period **CicloNAVIC 50** switches automatically off.

TIME ZONE

Select your time zone.

Options:

Auto

Time zone is automatically set when GPS signal is received.

Note: Changes due to daylight saving time have to be done manually.

Manual

Set time zone manually.

UTC +1

.

.

UTC -1

.

.

CALIBRATION

If the compass shows wrong directions it should be calibrated.
Do this best when **CicloNAVIC 50** is mounted on the bike or lays on an even base.

Press short UL-button to start the calibration.

Now rotate the **CicloNAVIC 50** (resp. the bike) repeatedly slowly clockwise (resp. ride a closely circle with the bike). **CicloNAVIC 50** shows main mode, but there are no cardinal directions shown in the display. When they appear, the calibration is ended.

UNIT

Choose between kilometer/meter and mile/feet.

Options:

km

Meile

TRACK

Based on the sport specific settings can be done.

Options:

Walk Mode

Pre-set value for log range 10m, navigation range 100m and turning range 20m

(Explanations see user mode)

Bike Mode

Pre-set value for log range 40m, navigation range 200m and turning range 40m

(Explanations see user mode)

User Mode

Options:

Log Range

Set the logging interval (how often a waypoint is set and stored).

Options:

10m

20m

30m

40m

100m

Navigation Range

Set in which radius a waypoint is seen as 'reached'.

Options:

100m

200m

300m

400m

500m

Turning Range

Set the distance to which the **CicloNAVIC 50** should navigate back (turn back) to a not reached waypoint.

Options:

20m
30m
40m
50m
100m

LANGUAGE

Choose your language.

Options:

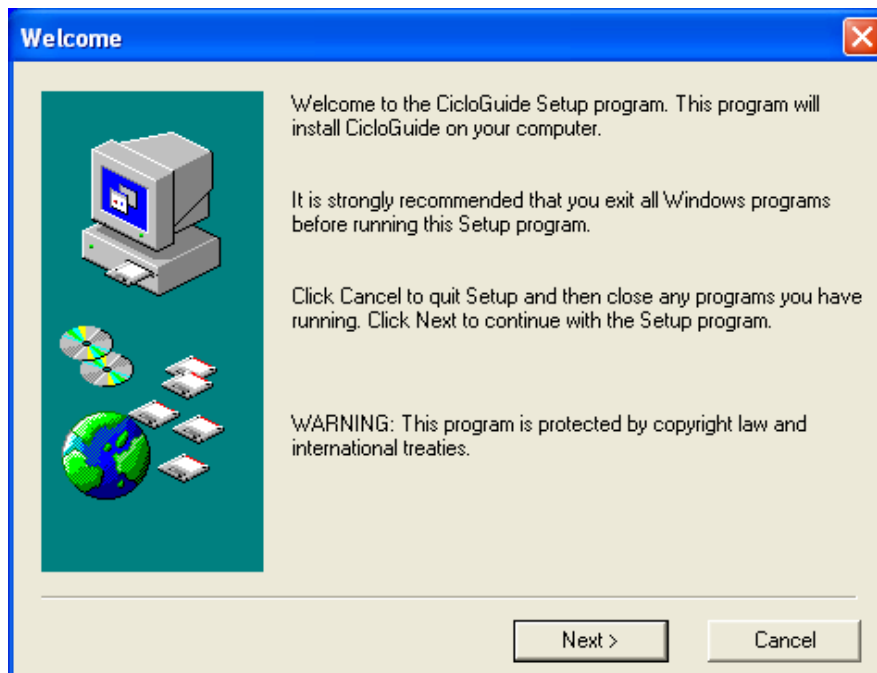
English
Francais
Deutsch
Dutch
Italiano
Espanol

6. Connect with PC / PC evaluation

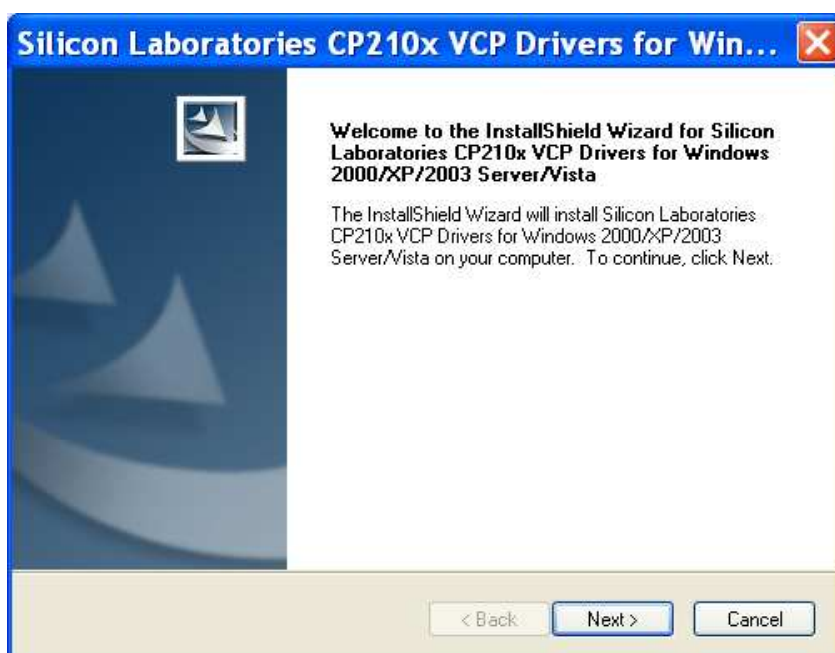
6.1 Installation

To install the program CicloGuide and the needed driver, insert CD and start installation of CicloGuide.

Installation screen for CicloGuide appears.



Follow the instructions on the screen, after installing the program it automatically installs the driver.



Follow the instructions on the screen until installation is finished.

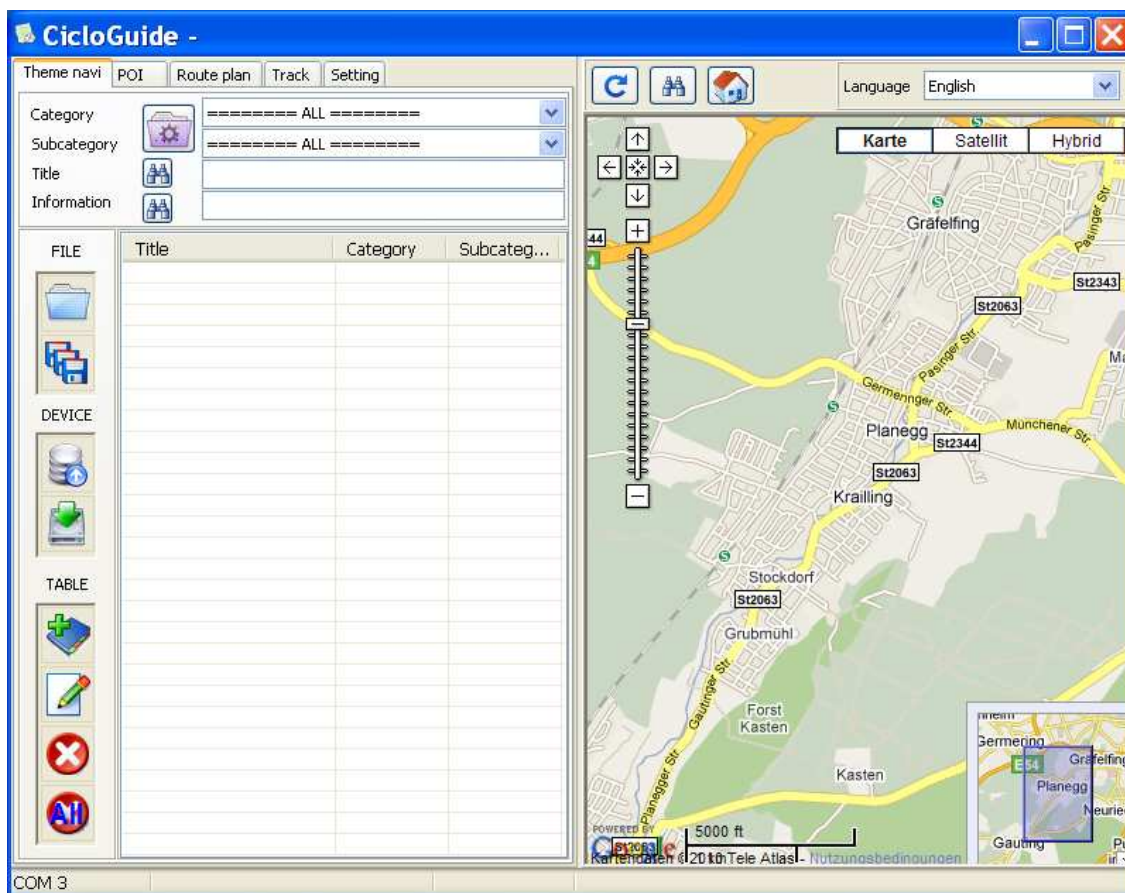
Now connect **CicloNAVIC 50** and PC with the USB cable and **CicloNAVIC 50** will be automatically recognized.

6.2 Using CicloGuide

Double click the icon to start the program.

Note: a connection with the internet is required to show the map.

When **CicloNAVIC 50** is already connected with the PC when you start the program, the corresponding ComPort is automatically recognized and will be shown in the bottom line of the program.



In the upper line of the program you can find the regarding functions.

6.2.1 Theme Navigation

Theme navigation works with Google map, and it is used to locate some interesting points on the Google map, and download corresponding data to the **CicloNAVIC 50**.

Theme navigation is classified into two layers of category, first layer defined as category and second layer defined as subcategory.

- Select "Theme Destination".
- Creating new theme destination by editing category/subcategory and add interesting points into category by clicking on the Google map, an icon is shown to mark the location.
- Destination editor will popup for data input, including title, category, subcategory and information.

To create own categories, click to



To transmit to **CicloNAVIC 50** click to



To store the table click to



6.2.2 POI

Here you can transmit the recorded POIs from **CicloNAVIC 50** to PC.

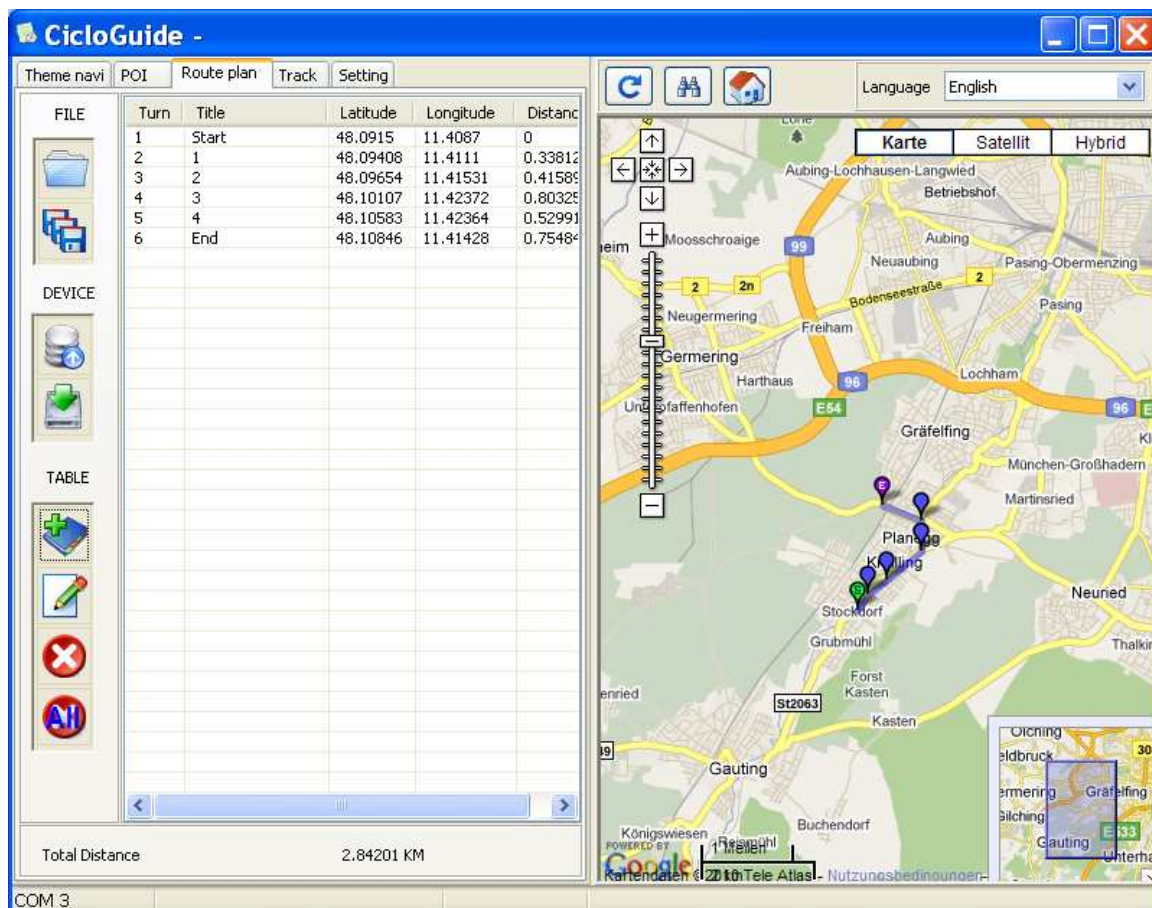
For this click to  , now the recorded POIs appear in the table.

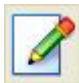
By clicking to a POI in the table the corresponding point is shown in the map.

6.2.3 Route

Route plan is designed for long distance waypoints navigation, you can define waypoints in the route through Google map, then download it to **CicloNAVIC 50** and navigate to destination by sequence or direct options.

- Select "Route" in the menu.
 - Double click required locations on the Google map to create waypoints for the route.
 - The created waypoints will be linked automatically together to form the route.
- The route can have max. 50 waypoints.



To name the single waypoints, click to the corresponding point in the table and then to .

Now you can name the waypoint.


To download the route to the **CicloNAVIC 50** click to .

To store the route click to .


6.2.4 Track

During navigation, some interesting points may want to be recorded. Back Track feature in **CicloNAVIC 50** provides this function to manually record the current location.

In CicloGuide the menu “Track” is used to manage the recorded points in the route and after downloading from **CicloNAVIC 50**, they can be saved as backup files.

For this click to  , the transmission to PC is started.

You can see the recorded tours in the table and by clicking on the table you can see them in the map.

To store click to 

To transform in a different format, click to KML, GPX or NEMA.

6.2.5 Settings

Here you can do some special settings and transmit them to the **CicloNAVIC 50**.

7. Service and maintenance

Protect from direct sunlight, heat and frost (below -10°C and over 50°C).

If not used, store **CicloNAVIC 50** in a dry and cool place.

Please do not store

- in a damp and not well-ventilated place
- in the car (especially not in summer)

Do not use or store **CicloNAVIC 50** near by strong magnetic or electro magnetic fields (this could e.g. influence the compass).

The **CicloNAVIC 50** is water resistant, but not usable in water.

Cleaning:

Clean the screen of the **CicloNAVIC 50** with a dry and smooth cloth.

8. Trouble shooting

Problem	Cause / Elimination
No display / no power	Battery not charged - to charge connect device with PC Device not powered on - press LR-Taste 3 sec. to power on
No GPS-signal	- use outside in an open area - check whether high buildings obstruct the view - re-start the device - try a reset: for this press UR-, UL- and LL-button simultaneously for 3 sec., then choose 'ColdStart' and confirm Note: with this reset all stored values, tours and settings are deleted
No distance shown	No recording started - to start a recording press UL-button 3 sec. and confirm with short pressing UL-button
Display shows „weak signal“	No GPS-signal resp. GPS-signal too weak - press short LL-button to get back - try again with better GPS-signal
Compass shows wrong value	Magnetic resp. electro-magnetic interference Calibrate compass (see chap. 5)
No PC-connection	Check usb-cable Check correct comport setting in program CicloGuide

9. Guarantee

We offer a guarantee for 2 years from the date of purchase on the **CicloNAVIC 50**. The guarantee is limited to material and processing faults. Broken transmitters, or damages of wasted parts of **CicloNAVIC 50** are excluded from the guarantee.

The guarantee is valid only if the computer, with accessories, has been handled and maintained carefully and according to operating instructions. The guarantee will take place through changes of or repairing the defective parts. The guarantee doesn't cover direct, indirect or subsequent damages which are related to the product.

This guarantee doesn't limit any rights of the consumer (considering relative national law) in respect to the dealer. To return the **CicloNAVIC 50** under conditions/terms of the guarantee, please refer to your dealer or your local distributor or send the computer with the proof of purchase (date) and all accessories and with sufficient postage to:

CICLO SPORT SERVICE
K. W. Hochschorner GmbH
Konrad-Zuse-Bogen 8
D-82152 Krailling

E-Mail: ciclo-service@ciclosport.de

Please read through the operating manual again carefully before sending in the device.

In case of valid guarantee claims, the repaired device or a replacement device will be returned free of charge.

Repair:

If your **CicloNAVIC 50** is sent in for repair (or battery change) or if a guarantee claim is not valid, repairs up to EUR 19.- will be carried out automatically.

In case of higher repair costs you will be notified. The repaired device will be sent back COD.

10. Technical Data

Positioning times	
- cold-start	35 seconds
- warm-start	32 seconds
- hot-start	2 seconds
- reacquisition time	2 seconds
Backlight	Yes
LCD resolution	128 x 128 dots
LCD viewing area	29,9 mm x 29,3 mm
Ambient temperature	- 10°C bis + 50°C
Power supply	3,7V Li Polymer rechargeable accu
Power consumption	~ 10 hours with GPS-navigation ~ 2 months if powered off
Water resistance	Up to 0,6 bar
Supports WAAS / EGNOS	
Waypoints	Max. 100.000 waypoints (One tour can have max. 1000 waypoints)
Route plan	1 route with 50 waypoints

11. Guarantee certificate

Sender:

Name, First name

Street, No.

Code/Location

Telephone (during the day)

E-Mail

Reason for return:

After expiry of the guarantee: Repairs should be carried out up to a value of
Euro _____



Disposal of Old Electrical & Electronic Equipment (Applicable in the European Union and other European countries with separate collection systems)

This symbol on the product or on its packaging indicates that this product shall not be treated as household waste. Instead it shall be handed over to the applicable collection point for the recycling of electrical and electronic equipment. By ensuring this product is disposed of correctly, you will help prevent potential negative consequences for the environment and human health, which could otherwise be caused by inappropriate waste handling of this product. The recycling of materials will help to conserve natural resources. For more detailed information about recycling of this product, please contact your local city office, your household waste disposal service or the shop where you purchased the product.

FCC Statement

This equipment has been tested and found to comply with the limits for a Class B digital device, pursuant to part 15 of the FCC rules. These limits are designed to provide reasonable protection against harmful interference in a residential installation. This equipment generates, uses and can radiate radio frequency energy and, if not installed and used in accordance with the instructions, may cause harmful interference to radio communications.

However, there is no guarantee that interference will not occur in a particular installation. If this equipment does cause harmful interference to radio or television reception, which can be determined by turning the equipment off and on, the user is encouraged to try to correct the interference by one or more of the following measures:

- Reorient or relocate the receiving antenna.
- Increase the separation between the equipment and receiver.
- Connect the equipment into an outlet on a circuit different from that to which the receiver is connected.
- Consult the dealer or an experienced radio/TV technician for help.

To assure continued compliance, any changes or modifications not expressly approved by the party responsible for compliance could void the user's authority to operate this equipment. (Example- use only shielded interface cables when connecting to computer or peripheral devices).

This equipment complies with Part 15 of FCC RF Rules. Operation is subject to the following two conditions:

- 1) This device may not cause interference and
- 2) This device must accept any interference, including interference that may cause undesired operation of the device.

Caution!

The manufacturer is not responsible for any radio or TV interference caused by unauthorized modifications to this equipment. Such modifications could void the user authority to operate the equipment.

Subject to technical alterations and fault.



Ciclosport
K.W. Hochschorner GmbH
Konrad-Zuse-Bogen 8
D - 82152 Krailling

fax: +49 (0) 89/8596301
mail: ciclosport@ciclosport.de
web: www.ciclosport.de